

SPEAKERCRAFT[®]

a **Nice** brand



SB-40P

Three Channel Passive LCR Soundbar

OWNER'S MANUAL

INTRODUCTION

The SpeakerCraft® SB-40P soundbar is designed to be used for the front left, center and right channels of a home theater system. It should be connected to the left, center and right channels of an A/V receiver or a multi-channel home theater amplifier.

The SB-40P has three speaker enclosures within the soundbar. The Left and Right chambers are vented enclosures, which are ideal for sound effects and deeper bass. The Center chamber is a highly damped sealed enclosure. Because the Center Channel in a home theater system receives nearly 70% of the audio, including most of the dialog, it needs to be particularly accurate and intelligible. For this reason, the SB-40P uses a sealed box design for the Center chamber to have lower group delay and more controlled excursion. The result is Center Channel dialog that is easier to understand with better music clarity and detail.

Woofers and Tweeters

The SB-40P incorporates six injection molded graphite woofers and three titanium tweeters. The woofers use a special formulation of graphite, polypropylene and carbon fiber materials, combining them using an injection molding process. The qualities of these different materials work together to deliver exceptionally clear mid-range, as well as the stiffness and strength required to produce strong low frequencies that blend well with any subwoofer.

The one-inch titanium tweeters provide excellent transient response. Titanium was chosen for its exceptional properties that accurately reproduce high frequencies and rapid transients with breathtaking realism. It is light, thin and stiff, yet delicate, therefore protected with three tweeter bars. The material properties of the IMG woofer cones and titanium tweeters work together to provide a spacious, open sound stage that seems more like it's coming from three separate speakers instead of a soundbar.

Crossover Networks

The SB-40P's three high-quality internal crossover circuits (one per channel) are carefully tuned through measurement and subjective listening tests for outstanding room filling natural sound.

Surface Placement

The SB-40P soundbar should be placed a surface directly under a display. Attach the included feet to the bottom four corners of the sound bar to minimize vibration.

Wall Mounting

An included mount makes it easy and quick to attach the SB-40P to a wall. It's designed to screw into wall studs mounted 16 inches on-center. It allows you to slide the soundbar horizontally, so it lines up perfectly with the center of the television.

Bass

The graphite woofers deliver outstanding bass for their size, but the SB-40P isn't designed to deliver true deep bass frequencies. To get a deep, full-range sound, we recommend you combine the SB-40P with a SpeakerCraft floor standing subwoofer.

Cabinet

The cabinet is made from thick MDF panels to prevent unwanted vibration, so the sound you hear comes from just the drivers and not the cabinet. The black polymer coating helps to acoustically seal and dampen the enclosure.

To get the best possible performance from your SB-40P, please read this manual carefully and follow all instructions for installation and setup.

SPEAKER PLACEMENT

Determine the Ideal Listening Zone

The optimal area where one might be in relation to the speaker locations is the *Ideal Listening Zone*, and the SB-40P should be placed to optimize the sound for this area. Ideally, the SB-40P (and the Video Display) should be centered on the same axis with the *Ideal Listening Zone*. For example, the SB-40P's center tweeter should be directly in front of your favorite listening seat (**Diagram 1**).

The SB-40P should be mounted directly under the video screen, as close as possible to the bottom of the screen. The soundbar should be centered horizontally with the video screen.

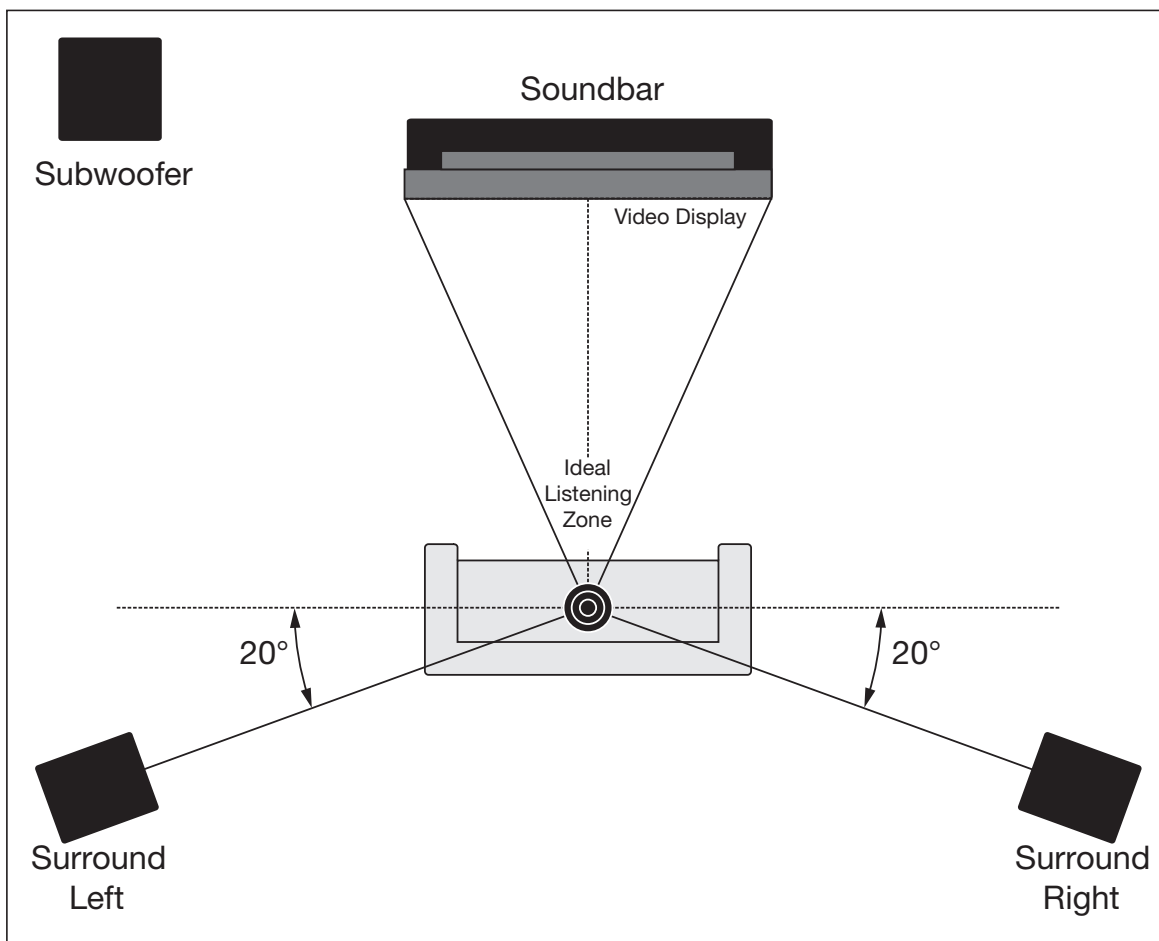


Diagram 1 *Speaker Location*

Using the Included Wall-Mount Bracket

The included wall-mount bracket makes it easy to attach the SB-40P to a wall built with standard 16-inch-on-center studs.

To mount the bracket:

1. Use a stud finder to locate the two wall studs closest to the horizontal center of the video screen.
2. Use a pencil to mark a point between these two studs and 6 inches below the bottom edge of the television chassis or projection screen.
3. Use a 1/4" bit to drill a hole in the wall.

Note: Make sure there are no electrical wires, conduits, pipes or vents behind the spot you've marked.

4. Insert the included wall anchor, and tap it in very gently with a hammer.

Note: Drill only as deep as needed to penetrate the wall.

5. Align the center mounting hole on the included mount with the wall anchor, and secure it with the screw provided.
6. Use a spirit (bubble) level to assure that the mount is perfectly leveled, then use the four included long screws to attach the mount to the wall (**Diagram 2**).

Note: Make sure the screws go into the wooden studs behind the wallboard (**Diagram 3**).

7. Attach the speaker wires to the soundbar, then lift the soundbar onto the wall mount so the mount mates with the bracket mounted on the back of the speaker (**Diagram 4**).
8. Press down lightly on the soundbar to make sure it's firmly seated on the bracket (**Diagram 5**).
9. Slide the soundbar horizontally so it is centered with the video screen (**Diagram 6**).

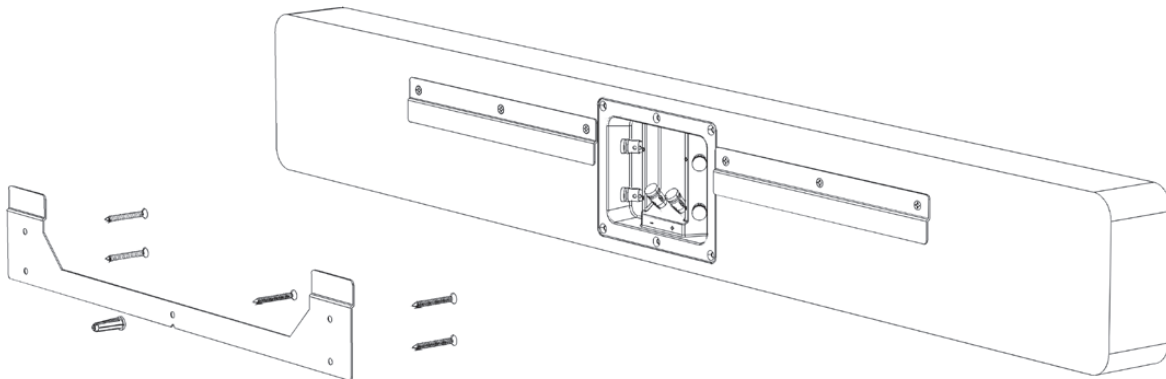


Diagram 2 Use Included Screws to Attach the Bracket to Wall

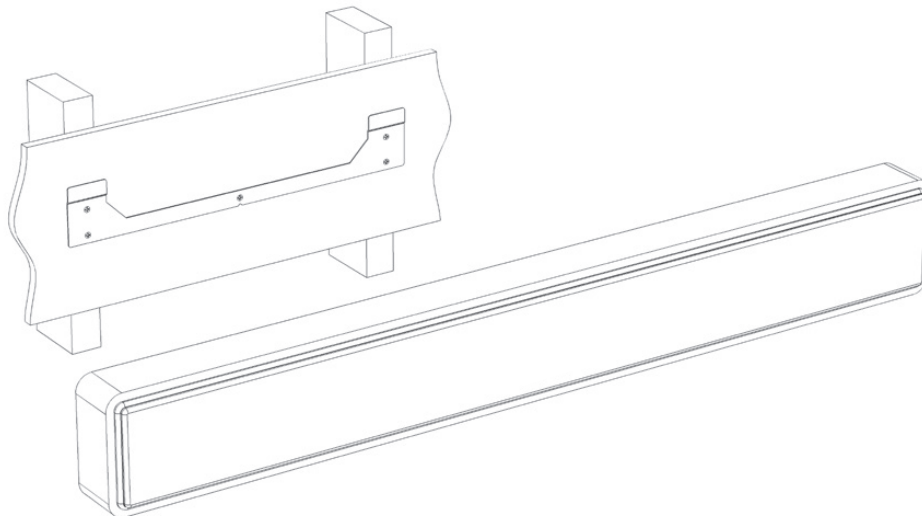


Diagram 3 Be Sure Screws Go Into The Wooden Studs Behind Wallboard

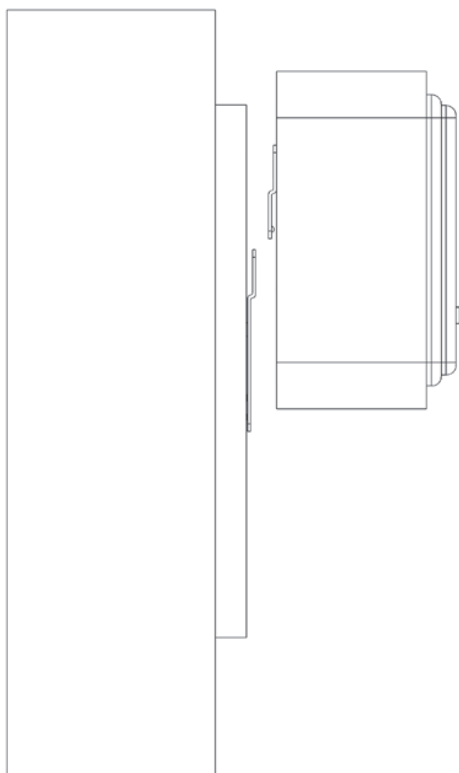


Diagram 4 *Line Up the Soundbar with the Wall Mount*

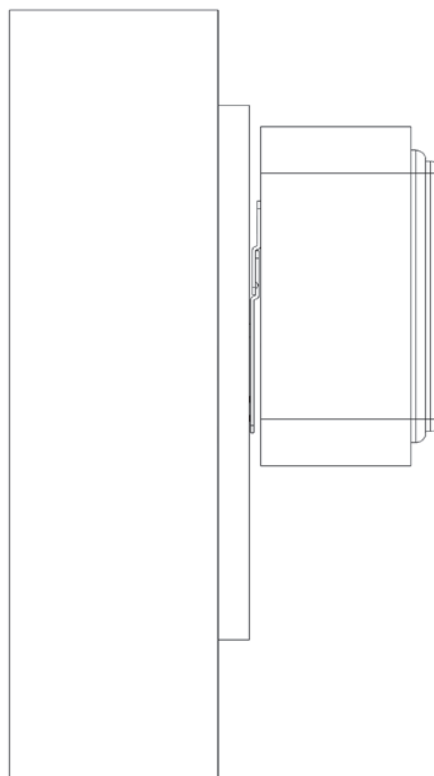


Diagram 5 *Press Down to Firmly Seat Soundbar onto the Bracket*

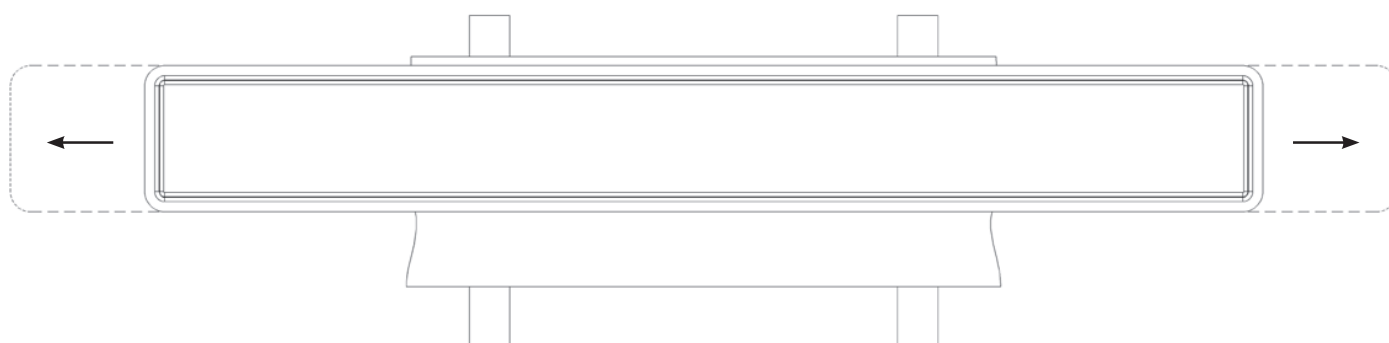


Diagram 6 *Slide the Soundbar Horizontally to Center with Video Screen*

SPEAKER CONNECTIONS

To connect the speakers:

1. Use 16AWG (min) 2-conductor stranded speaker wire for speaker connection.
2. Strip approximately 1/2 to 3/4 of an inch off the ends, and twist the strands together so there are no loose ends that can cause shorts.
3. Depress the SB-40P speaker terminals as shown in **Diagram 7**, so there is enough room to insert the stripped wire without damaging the strands.
4. Once about half an inch of the wire is inside the terminal, release the terminal to secure the wire.
5. Connect the marked conductor of the cable (it may have a red jacket, or a white or blue stripe down the side) to the +/- red terminal of the speaker.

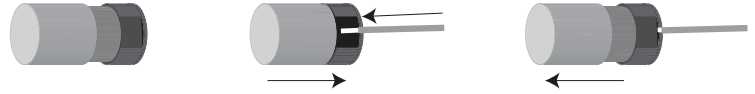
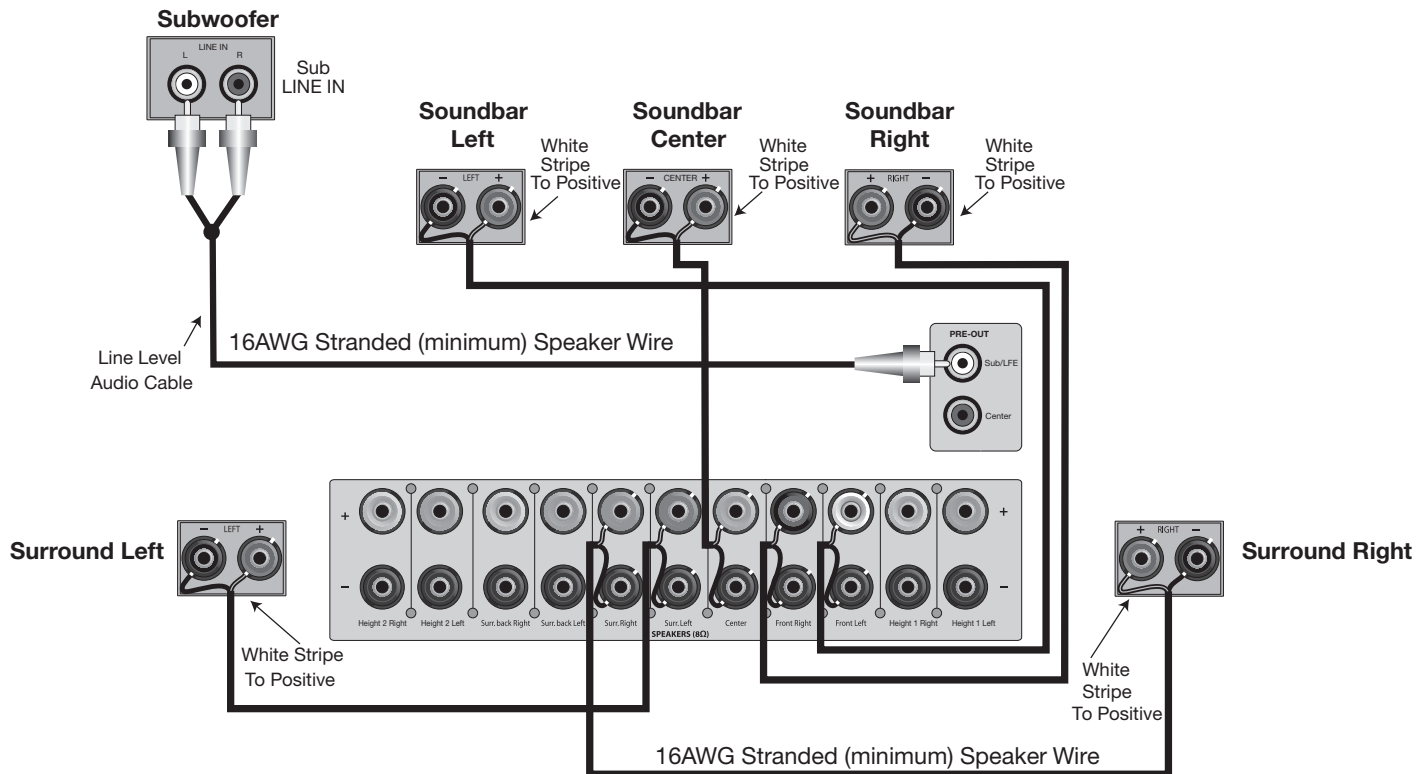


Diagram 7 Speaker Connections and Positions

Note: Make sure each channel from the receiver or amp (left, center or right) is connected to the correct channel of the SB-40P.

6. Connect the other conductor of the cable to the -/black terminal of the speaker.
7. Repeat this process for all three of the SB-40P's internal speakers (left, center and right).
8. Connect the speaker wires to the appropriate +/-red and -/black terminals on the receiver/amplifier.
9. Confirm the connection, polarity and position.

Note: Make certain all + and - are correct and that left, right, center and surround speakers are connected to the proper terminals and positioned correctly. Improper positioning of multi-channel speakers will adversely affect system performance. (**Diagram 8**)



PROTECTING THE CABINET FINISH

The finish on the SB-40P is a polymer coating that should be carefully maintained. Do not place any hard object directly on the cabinet without first putting down a soft cloth or other nonabrasive pad. Do not place any liquid containers including drinks, flower vases or plants directly on the cabinet to avoid water marks.

To clean the cabinet, use a feather duster to remove dust. Dust can be abrasive, and wiping dust with a rag can cause scratches. If additional cleaning is required, use a soft damp cotton cloth to clean the cabinet surface. Do not leave any residual moisture on the cabinet surface.

SOUNDBAR SPECIFICATIONS

Speaker Type	Triple 2-Way 3" Passive Soundbar
Applications	2, 2.1, 3.1, 5.1, 7.1, Atmos/DTS:X Systems
Woofers	Six 3" Graphite Cone Woofers
Tweeters	Three 1" Titanium Dome Tweeters with triple tweeter bar protection
Power Handling	60 Watts (per channel)
Frequency Response	140Hz - 20kHz
Impedance	6Ω
Sensitivity	88dB 2.83V/1m
Terminals	Gold Plated, Spring Loaded Binding Posts, 10AWG Max
Cabinet	Matte Black Rounded Corner MDF Cabinets
Grille	Removable Black Cloth Grille w/Neo Magnets
Wall Mount	Horizontally Adjustable Wall-Mounting Bracket
Dimensions (H x W x D)	5 3/16" x 39 13/16" x 2 3/4"

Features and specifications are subject to change without notice.

SPEAKERCRAFT[®]

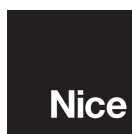
a **Nice** brand



USA and Canada Toll Free: 800-421-1587 or call 760-438-7000 | www.speakercraft.com

For warranty information, please visit www.speakercraft.com

SpeakerCraft | 5919 Sea Otter Place, Suite 100, Carlsbad, CA 92010



©2022 Nice North America LLC. SpeakerCraft is a registered trademark of Nice North America LLC. All rights reserved.

Dolby, Dolby Atmos, and the double-D symbol are registered trademarks of Dolby Laboratories. DTS, the Symbol, DTS and the Symbol together, DTS:X, and the DTS:X logo are registered trademarks or trademarks of DTS, Inc. in the United States and/or other countries.

