

PROFICIENT  
**Protege**<sup>™</sup>  
OWNER'S MANUAL



**LDA5**  
5" Dolby Atmos<sup>®</sup> Speakers

## **INTRODUCTION**

Congratulations and thank you for purchasing our Proficient Protege LDA5 Dolby Atmos Enabled Speakers!

Our speakers bring the immersive sound of Dolby Atmos and DTS:X soundtracks to your home theater without the need to install in-ceiling speakers or run wires through the ceiling.

### **Dolby Atmos Design**

To develop the LDA5, our acoustic engineer started with design parameters and specifications provided by Dolby Laboratories. This design is based on scientific calculation, adding the necessary filters to achieve the characteristics for an Atmos enabled speaker. We then conducted listening tests to assure that the LDA5 would deliver immersive, realistic sound effects with very low distortion and outstanding clarity.

### **Woofers**

To achieve state-of-the-art sound quality, Proficient uses the same woofer cone material developed for our other Protege cabinet speakers. This material employs a special formulation of graphite, polypropylene and carbon fiber materials, combined by using an injection molded process. This formulation not only provides good midrange sound quality but also provides the cone stiffness required to produce solid low-frequency response.

### **Tweeters**

The 1-inch silk dome tweeter provides excellent off-axis response by nature of its dome shape, complementing the dispersion of the woofer. The material properties of the IMG woofer and silk dome tweeter work together to provide a seamless sound quality that allows the Dolby-specified filter and angled baffle to do their job and project sound upward or downward, depending on placement, rather than toward the listener.

### **Mounting Options**

The LDA5 speakers can be mounted on the wall, under the ceiling. They come with integrated single-slot metal brackets that are installed flush on the back of the speaker. It's designed to "beam" sound downward so that the sound radiates downward from the wall and ceiling, accurately simulating the immersive effect of overhead speakers without the complications of mounting in-ceiling speakers.

In the alternative, the LDA5 can sit atop the Proficient Protege LB62 bookshelf speaker or LFS6 floor standing speaker, using the included adhesive feet to keep them stable. It's designed to "beam" sound upward so that the sound bounces off the ceiling, accurately simulating the immersive effect of overhead speakers without the complications of mounting in-ceiling speakers.

### **Adding More LDA5**

The first pair of LDA5 should be placed in the front of the home theater system. For more dramatic effects, LDA5's may also be used as side or rear surrounds.

### **Cabinets**

Our cabinets are made from thick MDF panels to prevent unwanted vibration so the sound you hear comes from just the drivers, not the cabinets. The black polymer coating helps to acoustically seal and dampen the enclosures.

To get the best possible performance from your LDA5s, please read this manual carefully and follow all instructions for installation and setup.

## SPEAKER PLACEMENT

### Dolby Atmos and DTS:X Surround Sound

The LDA5 is designed specifically to sit atop the front left and right (and optionally rear left and right) speakers in a surround sound system. If the front and rear speakers are placed correctly (as outlined in their owner's manuals and/or the manual for the A/V receiver or surround processor), then placing the LDA5s atop them should result in optimal performance. **(Diagram 1)**

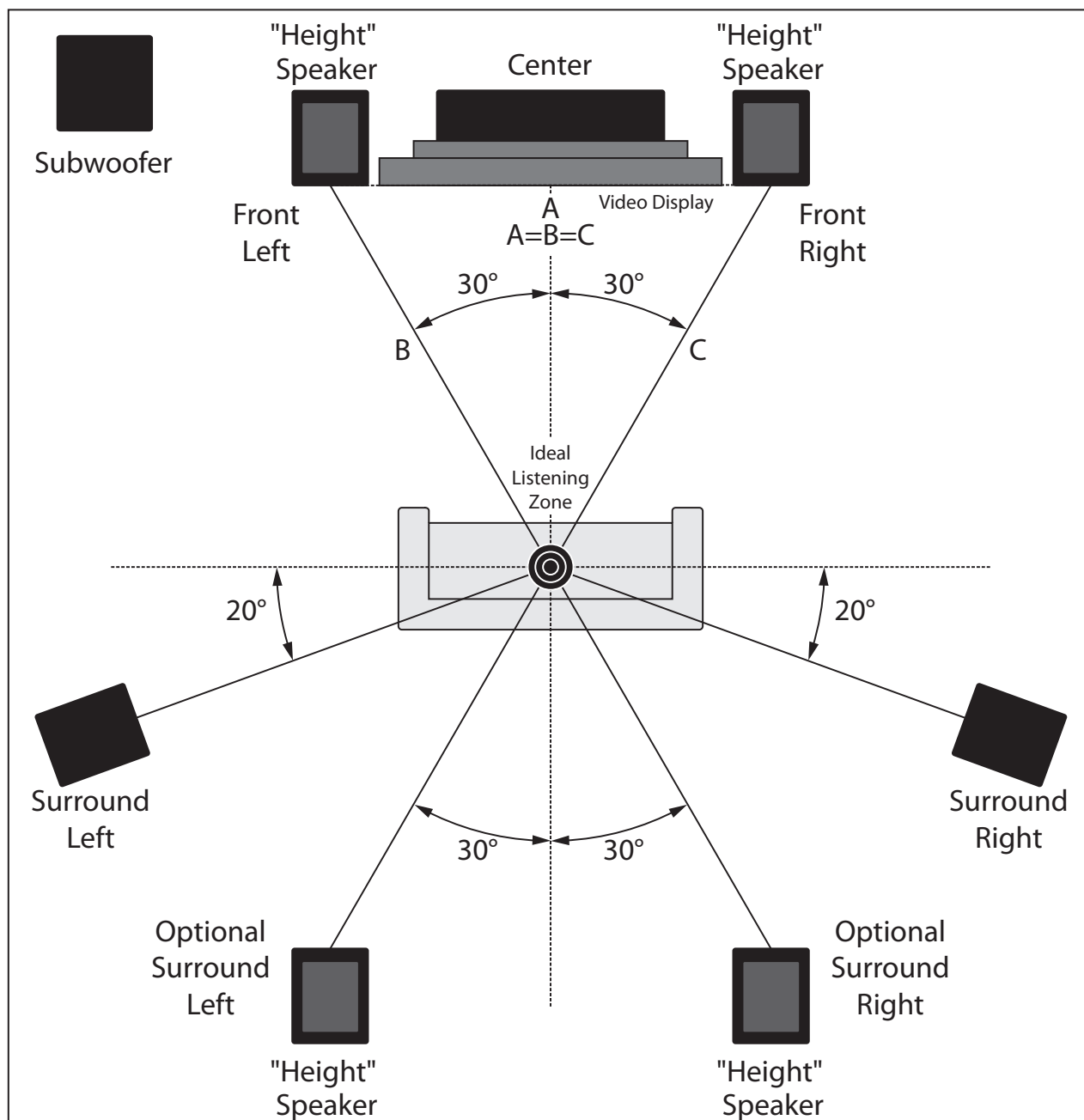


Diagram 1 Speaker Location

## SPEAKER PLACEMENT *(Continued)*

The height of the LDA5s should be at least a few inches above the ear level of a seated listener and no higher than half the height of the room. Any higher or lower, and the immersive overhead effect will not be as strong. **(Diagram 2)**

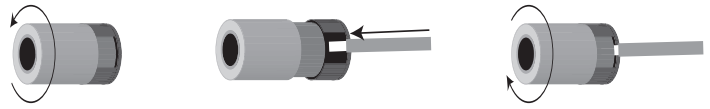
Dolby Atmos enabled speakers are designed to work in rooms with flat ceilings made of acoustically reflective material, such as drywall or plaster. Ideal performance can be achieved in rooms with ceilings ranging from 7½ to 12 feet high, and the ceiling height should be no more than 14 feet.



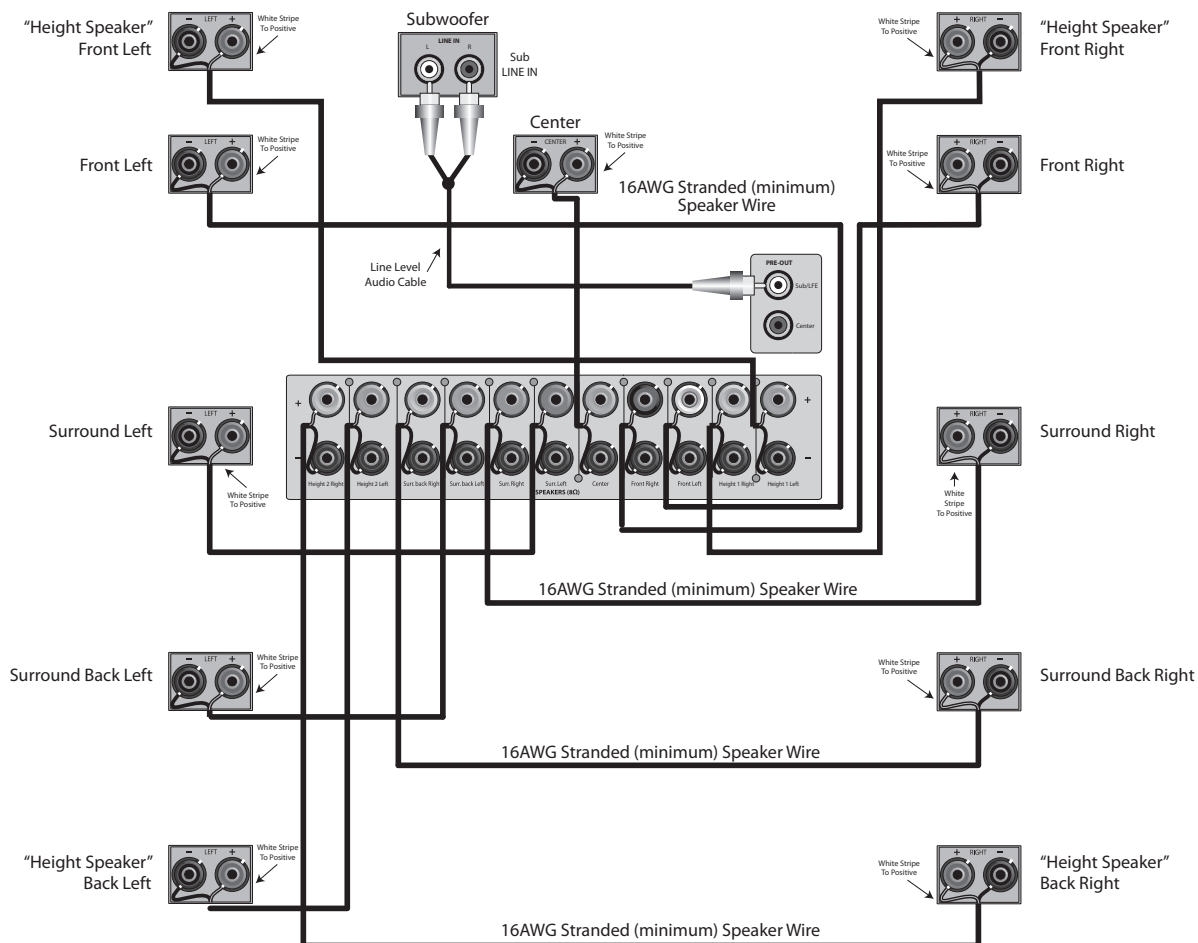
**Diagram 2** *Speaker Placement*

## SPEAKER CONNECTIONS

1. Use 16AWG (min) 2-conductor stranded speaker wire for speaker connection.
2. Strip approximately 1/2 to 3/4 of an inch off the ends and twist the strands together so there are no loose ends that can cause shorts.
3. Loosen the LDA5 speaker terminals as shown in **Diagram 3** so there is enough room between the post and the collar to feed the stripped wire through without damaging the strands.
4. Connect the marked conductor of the cable (it may have a red jacket, or a white or blue stripe down the side) to the +/red terminal of the speaker. Tighten the post to secure the wire.
5. Connect the other conductor of the cable to the -/black terminal of the speaker.
6. Repeat this process for all speakers.
7. Connect the speaker wires to the appropriate +/red and -/black terminals on the receiver/amplifier.
8. Confirm connection, polarity and position. Be sure all + and - are correct and that left, right, center and surround speakers are connected to the proper terminals and positioned correctly. Improper positioning of multi-channel speakers will adversely affect system performance. (**Diagram 4**)



**Diagram 3** Speaker Wire Connections



**Diagram 4** Speaker Connections and Positions

## PROTECTING THE CABINET FINISH

The finish on the LDA5 is a polymer coating that, while durable, should be carefully maintained. Do not place any object of any kind atop the LDA5, because you could damage the upward-firing speaker drivers.

To clean the cabinet, use a feather duster to remove dust. Dust can be abrasive and wiping dust with a rag can cause scratches. If additional cleaning is required, use a soft damp cotton cloth to clean the cabinet surface. Do not leave any residual moisture on the cabinet surface.

---

## DOLBY ATMOS SPEAKER SPECIFICATIONS

### LDA5

<b>Speaker Type:</b>	2-Way 5" Atmos Enabled Speaker
<b>Applications:</b>	Atmos/DTS:X Systems
<b>Woofers:</b>	5" Graphite Cone Woofers
<b>Tweeters:</b>	1" Silk Dome Tweeters
<b>Power Handling:</b>	60 Watts
<b>Frequency Response:</b>	120Hz - 20kHz
<b>Impedance:</b>	6Ω
<b>Sensitivity:</b>	84dB 2.83V/1m
<b>Terminals:</b>	Gold-Plated 5-Way Binding Posts, 10AWG Max
<b>Cabinets:</b>	Matte Black Rounded Corner MDF Cabinets
<b>Grilles:</b>	Removable Black Cloth Grilles w/Neo Magnets
<b>Integrated Wall Mounts:</b>	Flush Mounted Single-Slot Wall Mounts
<b>Dimensions (H x W x D):</b>	5 <sup>7</sup> / <sub>8</sub> " x 6 <sup>7</sup> / <sub>8</sub> " x 10 <sup>1</sup> / <sub>4</sub> "

*Features and specifications are subject to change without notice.*

## LIMITED TEN-YEAR WARRANTY

Proficient Audio Systems ("Proficient") warrants to the original retail purchaser only ("you") that this product will be free from defects in materials and workmanship for a period of ten years (the "Warranty Period"), subject to the limitations and exclusions set out in this Limited Warranty. This warranty is not transferable to subsequent owners of the product. If you discover a defect in material or workmanship within the Warranty Period, you can obtain warranty service by contacting Proficient during the Warranty Period at 800.472.5555 or techsupport@proficientaudio.com or by contacting the dealer from whom you purchased the product. Defective products must be shipped, prepaid and insured, together with proof of purchase. Warranty service requests made without proof of date of purchase will be denied. Freight collect shipments will be refused. It is preferable to ship this product in the original shipping container to lessen the chance of transit damage. In any case, the risk of loss or damage in transit is to be borne by the purchaser.

If, upon examination by Proficient or its authorized dealer, it is determined that the unit is in fact defective, Proficient will, at its option:

- Repair or replace the product at no additional charge; or
- If the model is no longer available and can not be repaired effectively, replace the unit with a current model of equal or greater value. In some cases where a new model is substituted, a modification to the mounting surface may be required. If mounting surface modification is required, Proficient assumes no responsibility or liability for such modification.

Proficient will bear the cost of returning the repaired or replaced product to you, freight prepaid. All replaced parts and product become the property of Proficient Audio Systems. The foregoing is your sole and exclusive remedy for breach of warranty. If the product is not found to be defective, Proficient will contact you to arrange for return of the product to you, at your expense.

### EXCLUSIONS:

- This Warranty does not include service or parts to repair damage caused by accident, disaster, misuse, abuse, negligence, inadequate packing or shipping procedures, commercial use, voltage inputs in excess of the rated maximum of the unit, or service, repair or modification of the product by unauthorized dealers. This Warranty also excludes normal cosmetic deterioration caused by environmental conditions.
- This Warranty will be void if:
  - the Serial Number on the product has been removed, tampered with or defaced.
  - the product was not purchased from an authorized dealer.

**THE FOREGOING WARRANTIES ARE EXCLUSIVE AND IN LIEU OF ALL OTHER EXPRESSED AND IMPLIED WARRANTIES. PROFICIENT EXPRESSLY DISCLAIMS ALL SUCH OTHER WARRANTIES, INCLUDING BUT NOT LIMITED TO IMPLIED WARRANTIES OF MERCHANTABILITY, FITNESS FOR A PARTICULAR PURPOSE AND NON-INFRINGEMENT.** In no event will Proficient be liable for any incidental or consequential damages arising out of the use or inability to use the product, even if Proficient has been advised of the possibility of such damages, or for any claim by any other party. Notwithstanding the above, if you qualify as a "consumer" under the Magnuson-Moss Warranty Act, then you may be entitled to any implied warranties allowed by law for the Warranty Period. Further, some states do not allow limitations on how long an implied Limited Warranty lasts or allow the exclusion or limitation of consequential damages, so such limitations may not apply to you.

### ATTENTION TO OUR VALUED CONSUMERS:

To ensure that consumers obtain quality pre-sale and after-sale support and service, Proficient products are sold exclusively through Authorized Installing Dealers and Authorized Internet Sellers. **Please be advised that Proficient warranties are void if product is purchased from an Unauthorized Internet Seller.**

For technical inquires, please call 800.472.5555 or e-mail us at techsupport@proficientaudio.com. We are available to assist you every weekday, except holidays, between the hours of 7:00 a.m. and 5:00 p.m. PST.

# PROFICIENT.

5919 Sea Otter Place • Carlsbad, CA 92010 • 800.472.5555 • Fax 707.283.5901 • [proficientaudio.com](http://proficientaudio.com)

©2019 Nortek Security & Control, LLC. All rights reserved. Proficient® is a registered trademark of Nortek Security & Control, LLC.



*Dolby, Dolby Atmos, and the double-D symbol are registered trademarks of Dolby Laboratories.*

*DTS, the Symbol, DTS and the Symbol together, DTS:X, and the DTS:X logo are registered trademarks or trademarks of DTS, Inc. in the United States and/or other countries.*



P/N: 10017413 (Rev C)